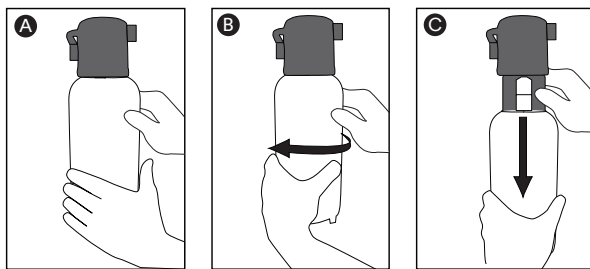


Filter cartridge replacement instructions

- Grasp filter (see figures A & B) and turn to the left (counterclockwise) until filter comes to a complete stop (water automatically turns off). Water may leak momentarily from vent tube. This is normal. Gently pull filter downward to remove (see figure C).
- Remove sanitary protective cap from new replacement cartridge.
- Ensure both o-rings are present on the replacement filter and are seated into grooves; moisten o-rings with water. DO NOT use any petroleum products to lubricate the o-rings.
- Insert replacement filter into filter head assembly. Turn replacement filter one quarter turn to the right (clockwise) until it stops. When fully engaged, the top surface of the filter will be flush with the bottom of the filter head assembly.
- Open cold water supply valve. Run water through the filter to flush in accordance with Performance Data Sheet. Any air left in the system may temporarily cause the water to be cloudy. While system is flushing, check for leaks. Repair any leaks as needed before continuing.
- System is now under pressure and ready to use.



Troubleshooting

Water does not flow from the filter:

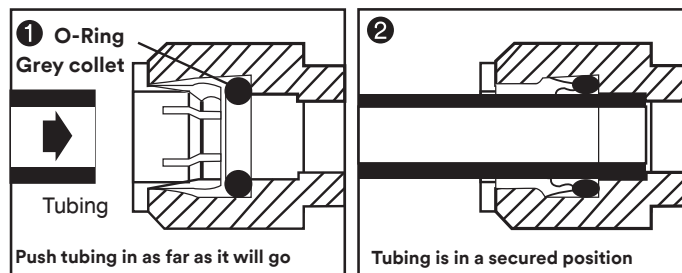
Check to see if the original water supply valve is open, allowing water to flow to the filter. Also, check for crimps or sharp bends in tubing. Check maintenance schedule for cartridge change-out.

Water appears cloudy or air comes out of filter faucet:

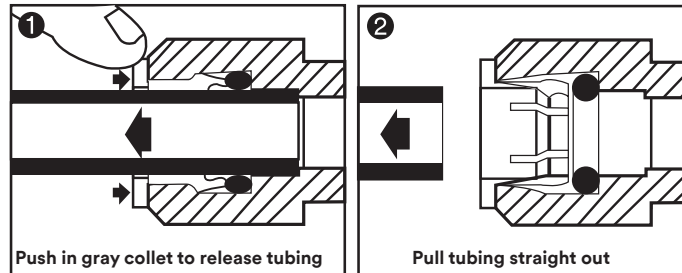
Flush filter to remove any carbon fines or trapped air in the filter and water lines. Longer flushing may be required to eliminate air bubbles completely. Refer to Performance Data Sheet or Flush Instruction Card for proper flush time.

Quick connect guide

To attach tubing



To release tubing



Filter Cartridge replacement

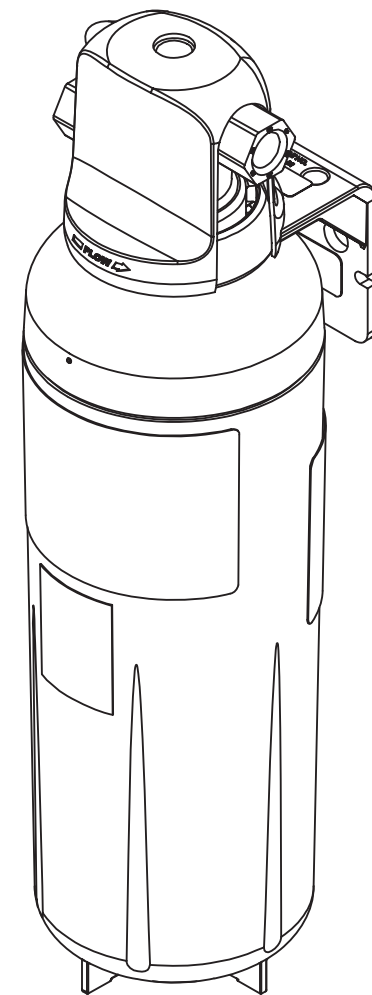
Change the disposable filter cartridge every six-twelve (6-12) months, at the rated capacity or sooner if a noticeable reduction in flow rate occurs. Local water conditions and actual volume of water can affect filter cartridge life and replacing it is recommended if noticeable drop in pressure occurs at the faucet



Separation and Purification Sciences Division
3M Thailand Limited
12th Floor, Serm-Mit Tower
159 Asoke-Montri Road
Klongtoey Nua, Wattana, Bangkok 10110
0-2260-8577 Fax 0-2261-7535
www.3m.com/th, www.facebook.com/3Mthailand

3M Science.
Applied to Life.™

Installation & Operating Instruction for Undersink - Large System (DWS160-L)



Owner's note : Please retain instruction for future operation and maintenance

3M Water Filter
Open Size: 300mm x 210mm H
Closed Size: 100mm x 210mm H

Safety information

Read, understand and follow all safety information contained in these instructions prior to installation and use of the Undersink - Large system (DWS160-L). Retain these instructions for future reference.

Intended use:

The DWS160-L water filtration system is intended for use in filtering potable water and has not been evaluated for other uses.

Explanation of signal word consequences



Warning

Indicates a potentially hazardous situation, which, if not avoided, could result in death or serious injury and/or property damage.



Caution

Indicates a potentially hazardous situation, which, if not avoided, may result in property damage.

Warning

To reduce the risk associated with the ingestion of contaminants:

- Do not use with water that is microbiologically unsafe or of unknown quality without adequate disinfection before or after the system.

To reduce the risk associated with hazardous voltage:

- Do not install near electric wiring or piping which may be in path of a drilling tool when selecting the position to mount the system bracket.

Caution

To reduce the risk associated with property damage due to water leakage or flooding:

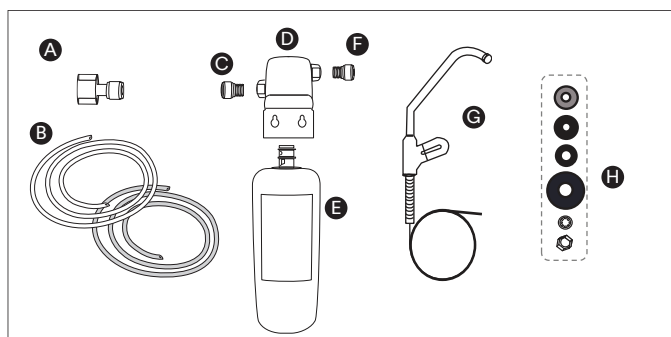
- Read and follow all Instructions before installation and use of this system to reduce the risk of water leakage or flooding and to ensure optimal filter performance.
- Installation and use MUST comply with all state and local plumbing codes.
- Protect from freezing, remove filter cartridge when temperatures are expected to drop below 40° F (4.4° C).
- Do not install systems in areas where ambient temperatures may go above 110° F (43.3° C).
- Do not install on hot water supply lines. The maximum operating water temperature of this filter system is 100° F (37.8° C).
- Do not install if water pressure exceeds 125 psi (862 kPa). If your water pressure exceeds 80 psi (552 kPa), you must install a pressure limiting valve. Contact a plumbing professional if you are uncertain as to how to check your water pressure.

- Do not install where water hammer conditions may occur. If water hammer conditions exist you must install a water hammer arrester. Contact a plumbing professional if you are uncertain how to check for this condition.
- Where a backflow prevention device is installed on a water system, a device for controlling pressure due to thermal expansion must be installed.
- Do not use a torch or other high temperature sources near filter system, cartridges, plastic fittings or plastic plumbing.

Getting started

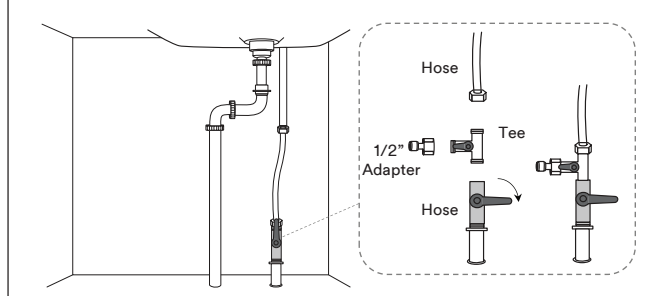
Part & Material included

- | | |
|----------------------------|-----------------------------|
| A 1/2" Adapter | E Filter cartridge |
| B 3/8" Tubing | F 1/4" Adapter |
| C 3/8" Adapter | G Faucet |
| D Water filter head | H Faucet accessories |

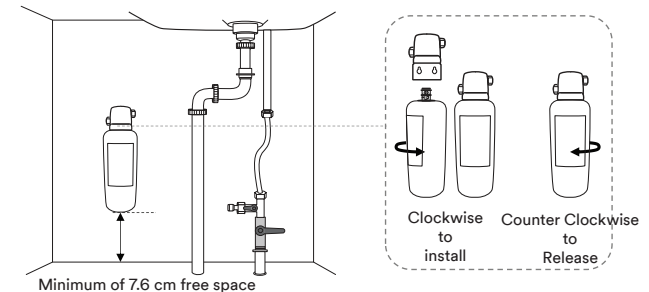


Installation

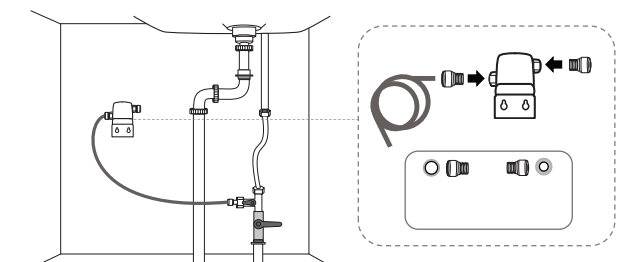
- Close the water inlet valve and disconnect the hose.
- Install Tee and 1/2" adapter (A). Be sure to use PTFE tape.
- Reconnect the hose.



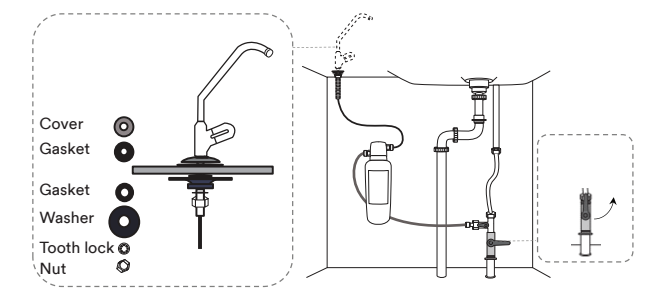
- Fasten mounting bracket to mounting surface. Important: Allow a minimum of 3" (7.6 cm) free space underneath system required to change filter.
- Remove the cap from cartridge. Inspect the cartridge for any damage.
- Make sure the o-rings are present and positioned correctly in grooves. Moisten the o-rings with water.



- Fasten 3/8" adapter (C) on the inlet of filter head (left) and use tubing (B) to connect between 3/8" adapter and water supply line.
- Fasten 1/4" adapter (F) on the outlet of filter head (Right).



- Drill the sink and assembly the faucet (G) and accessories (H) as shown in the picture.
- Connect the faucet tubing (G) on the outlet of filter head (Right).
- Open water supply valve and check for leaks
- Run water through the filter to flush in accordance with Performance Data Sheet. Any air left in the system may temporarily cause the water to be cloudy.
- Your system is now ready for service.



3M Water Filter
Open Size: 300mm x 210mm H
Closed Size: 100mm x 210mm H